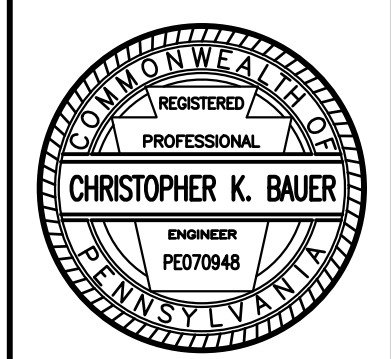
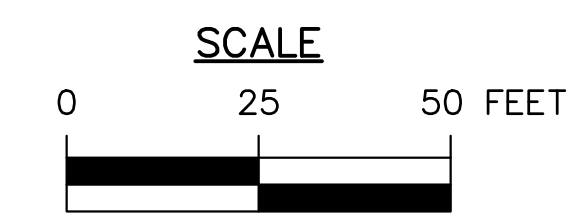
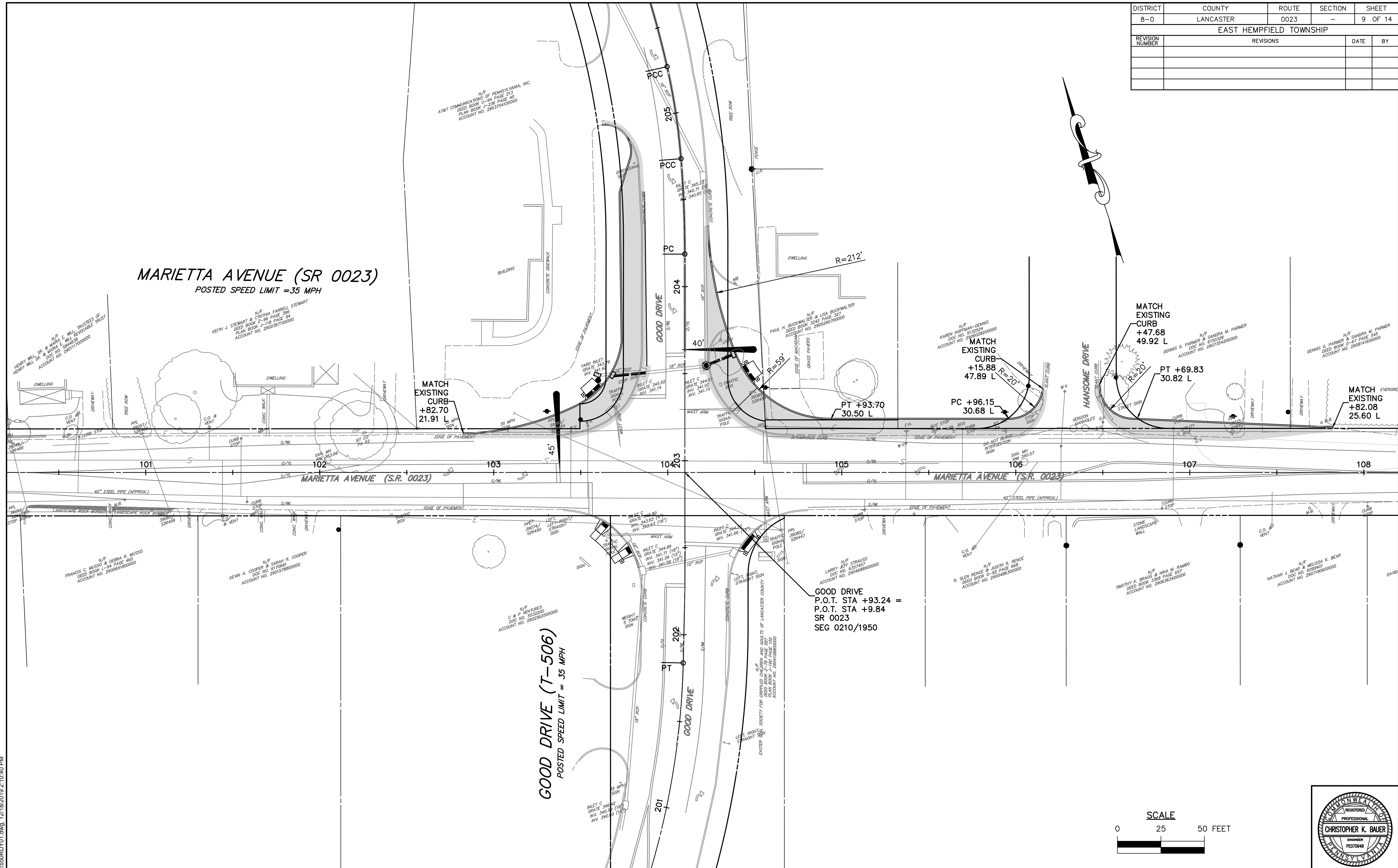


DISTRICT	COUNTY	ROUTE	SECTION	SHEET
8-0	LANCASTER	0023	-	9 OF 14
EAST HEMPFIELD TOWNSHIP				
REVISION NUMBER	REVISIONS	DATE	BY	



415 FALLOWFIELD ROAD  
SUITE 301  
CAMP HILL, PA 17011  
PH: (717) 975-0295  
FAX: (717) 975-0294

DESIGN BY: JCR  
DRAWN BY: AMB  
CHECKED BY: CKB

JOB NO: 917550  
DWG: 550RDY01  
DATE: 12/18/19

**EAST HEMPFIELD TOWNSHIP**  
1700 NISSLEY ROAD  
P.O. BOX 128  
LANDISVILLE, PA 17538  
(717) 898-3100

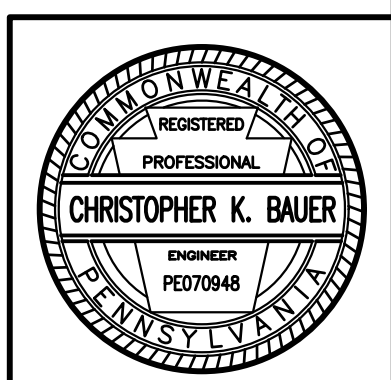
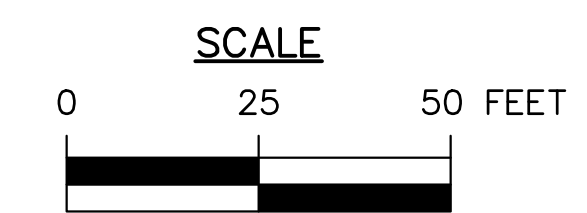
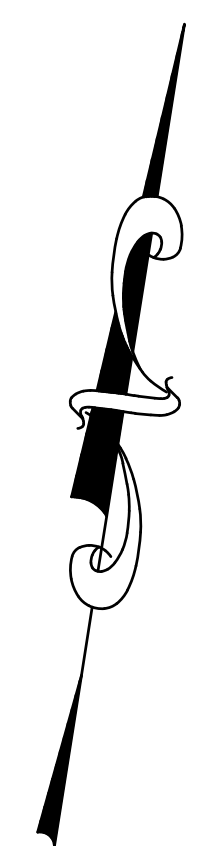
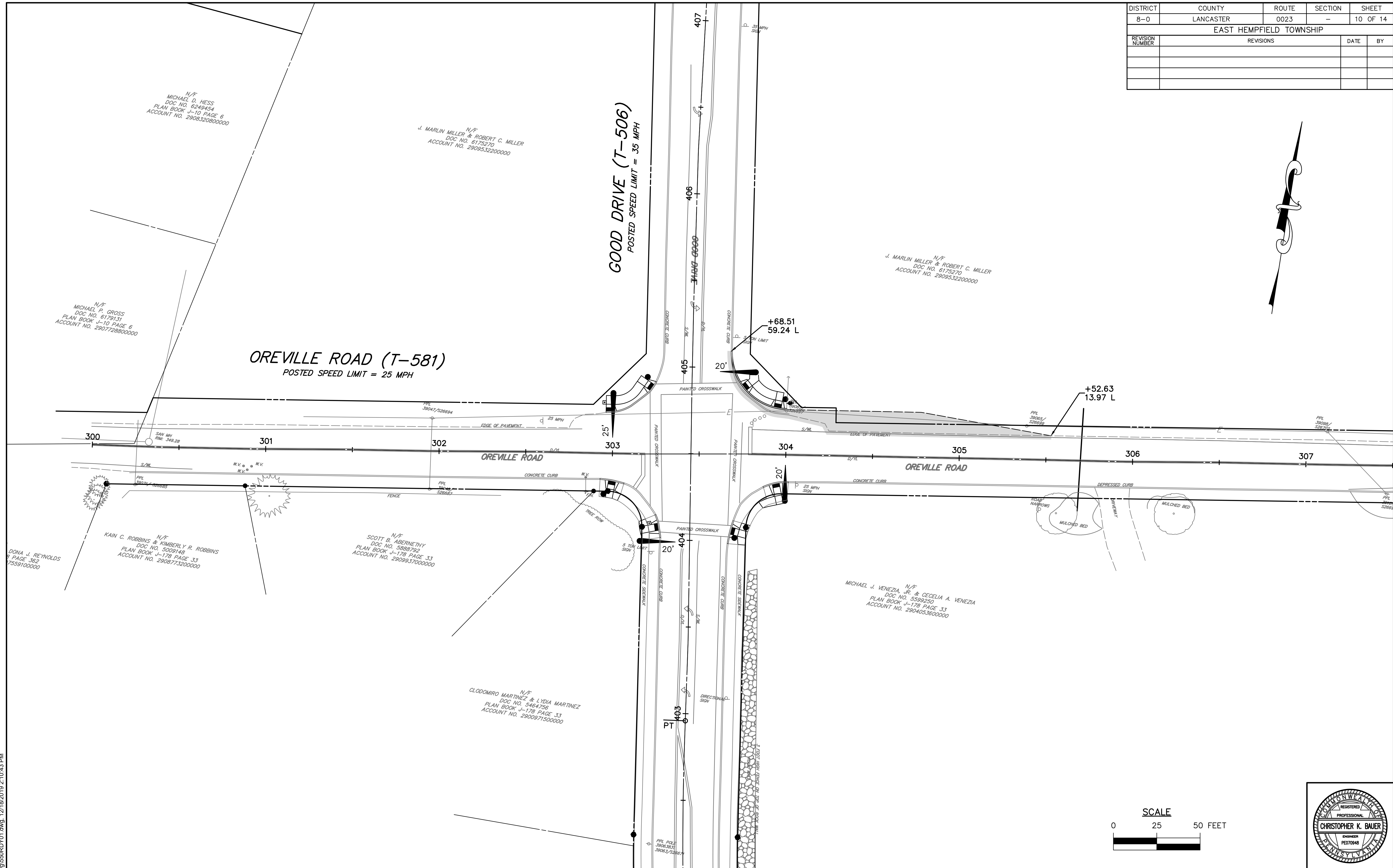
**ROADWAY IMPROVEMENTS FOR EAST HEMPFIELD  
MARIETTA AVENUE (S.R. 0023) AND GOOD DRIVE**  
EAST HEMPFIELD TOWNSHIP  
LANCASTER COUNTY

**ROADWAY  
IMPROVEMENT PLAN**

P:\1917550\_22\dwg\550RDY01.dwg, 12/18/2019 2:10:40 PM



DISTRICT	COUNTY	ROUTE	SECTION	SHEET
8-0	LANCASTER	0023	-	10 OF 14
EAST HEMPFIELD TOWNSHIP				
REVISION NUMBER	REVISIONS	DATE	BY	



P:\17550.22\dwg\550RDY01.dwg, 12/18/2019 2:10:43 PM



415 FALLOWFIELD ROAD  
SUITE 301  
CAMP HILL, PA 17011  
PH: (717) 975-0295  
FAX: (717) 975-0294

DESIGN BY: JCR    JOB NO: 917550  
DRAWN BY: AMB    DWG: 550RDY01  
CHECKED BY: CKB    DATE: 12/18/19

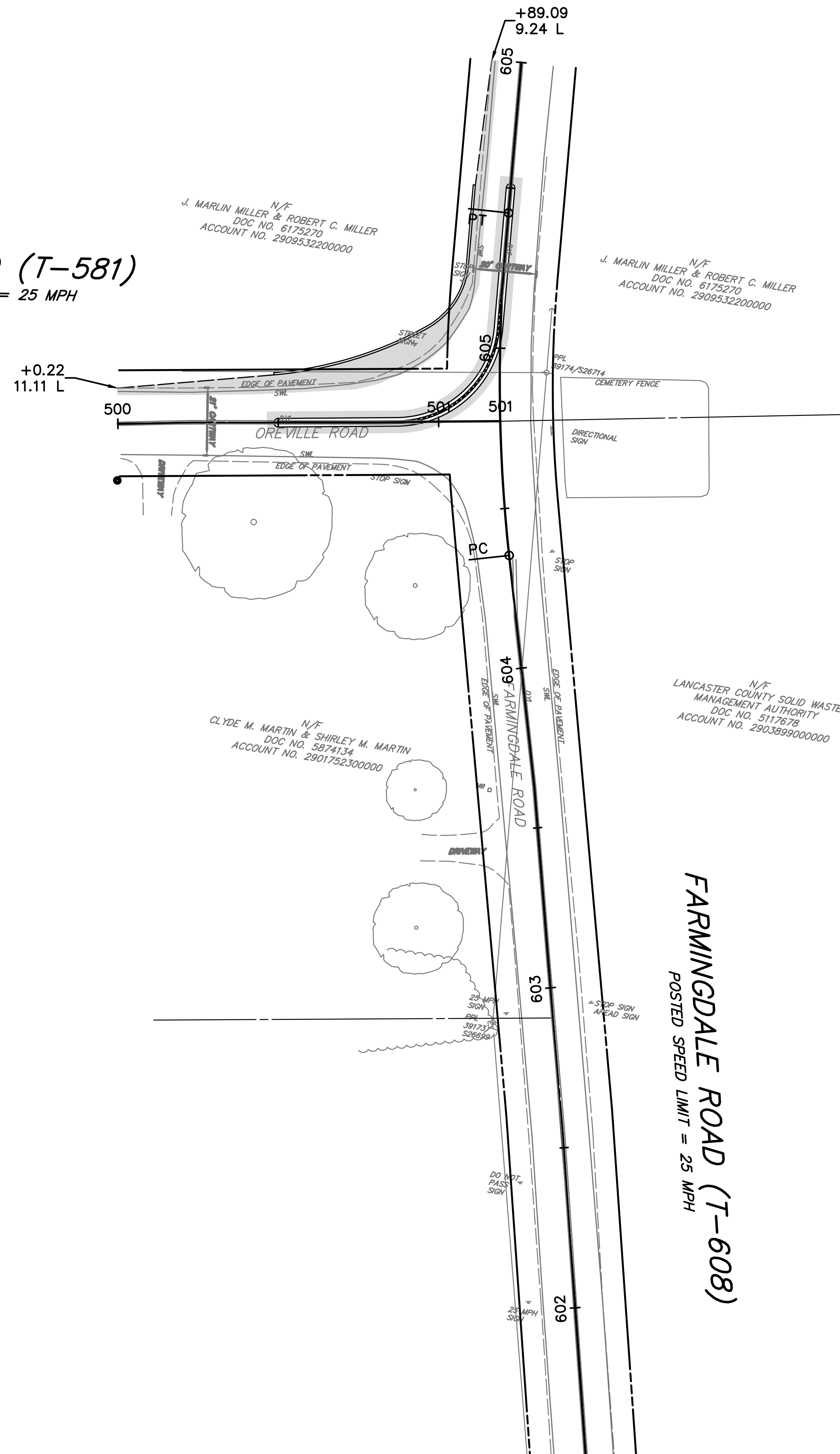
**EAST HEMPFIELD TOWNSHIP**  
1700 NISSLEY ROAD  
P.O. BOX 128  
LANDISVILLE, PA 17538  
(717) 898-3100

**ROADWAY IMPROVEMENTS FOR EAST HEMPFIELD  
MARIETTA AVENUE (S.R. 0023) AND GOOD DRIVE**  
EAST HEMPFIELD TOWNSHIP      LANCASTER COUNTY

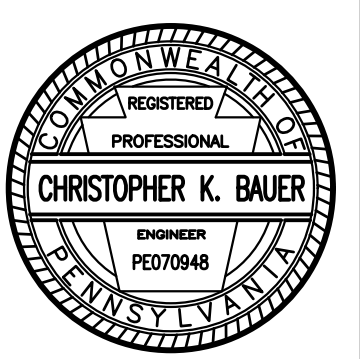
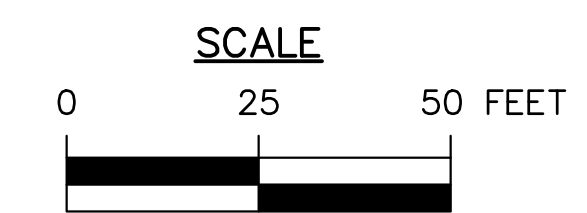
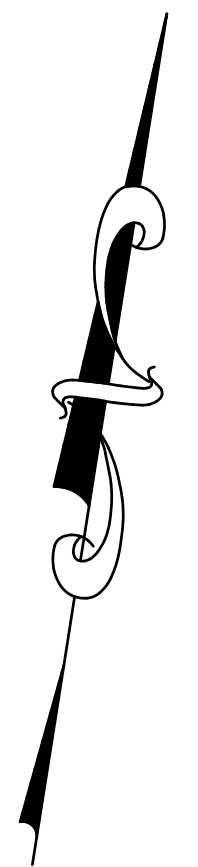
**ROADWAY  
IMPROVEMENT PLAN**

DISTRICT	COUNTY	ROUTE	SECTION	SHEET
8-0	LANCASTER	0023	-	11 OF 14
EAST HEMPFIELD TOWNSHIP				
REVISION NUMBER	REVISIONS	DATE	BY	

**OREVILLE ROAD (T-581)**  
POSTED SPEED LIMIT = 25 MPH



**FARMINGDALE ROAD (T-608)**  
POSTED SPEED LIMIT = 25 MPH



P:\917550.22\dwg\550RDY01.dwg, 12/18/2019 2:10:48 PM



415 FALLOWFIELD ROAD  
SUITE 301  
CAMP HILL, PA 17011  
PH: (717) 975-0295  
FAX: (717) 975-0294

DESIGN BY: JCR  
DRAWN BY: AMB  
CHECKED BY: CKB  
JOB NO: 917550  
DWG: 550RDY01  
DATE: 12/18/19

EAST HEMPFIELD TOWNSHIP  
1700 NISSLEY ROAD  
P.O. BOX 128  
LANDISVILLE, PA 17538  
(717) 898-3100

ROADWAY IMPROVEMENTS FOR EAST HEMPFIELD  
MARIETTA AVENUE (S.R. 0023) AND GOOD DRIVE  
EAST HEMPFIELD TOWNSHIP  
LANCASTER COUNTY

ROADWAY  
IMPROVEMENT PLAN